



Australian Government
Australian Maritime Safety Authority

Are you an Indigenous land and sea management organisation that operates, or would like to operate, a ranger vessel?

Vessels operated by Indigenous land and sea management organisations, including ranger vessels, are regulated under Australia's National System for Domestic Commercial Vessel Safety. This is regardless of the area of operation — freshwater, coastal or marine areas.

We call vessels operating under this legislation 'domestic commercial vessels' or DCVs for short. Marine Orders are regulations made under this legislation that contain the detailed requirements; Marine Orders 501 – 507 apply to domestic commercial vessels.



Because of the unique role of ranger vessels, you might not have to meet certain requirements about your vessel, its operations, and crew. We call these 'exemptions'.

Before you begin operating a vessel, the following requirements must be in place, unless you have an exemption. Some exemptions described in this guidance require an application and written approval. Other exemptions do not require written approval, but the conditions of the exemption must continue to be met.

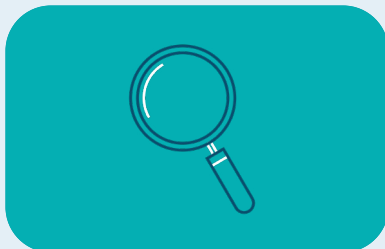


1. Your vessel

All vessels are required to have a certificate of survey issued under Marine Order 503 (Certificates of Survey) unless they are exempt under *Exemption 02 – Marine Safety (Certificate of Survey)* or *Exemption 40 – Marine Safety (Class C restricted operations)*. The vessel permission, when issued, describes the service categories assigned to the vessel and any conditions that apply, and will also include a unique vessel identifier that must be displayed clearly and prominently on the vessel.



Apply for a Certificate of Survey, Exemption 02 or Exemption 40.



Once application for Certificate of Survey or Exemption 40 submitted, AMSA will send you survey codes (not required for Exemption 02).



Contact an accredited marine surveyor and give them the survey codes to survey your vessel.



Do your research prior to purchasing a vessel. All ranger vessels need to meet specified standards for design, construction, stability and safety equipment that apply to the vessel. A marine surveyor is required to assess your vessel against these standards before a Certificate of Survey or Exemption 40 is issued.

Marine Order 503:



Exemption 02:



Exemption 40:



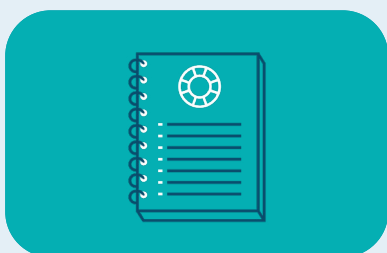
Finding an accredited marine surveyor:



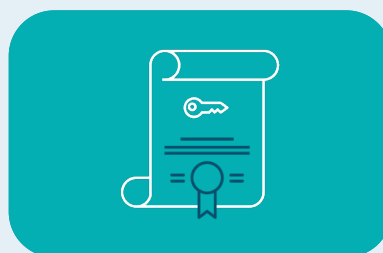
2. Your vessel operations and activities

A certificate of operation, issued to the vessel owner/operator, is required for all vessels under *Marine Order 504 (Certificates of Operation and Operational Requirements)* unless exempt under *Exemption 03 – Marine Safety (Certificates of Operation)*.

All vessel operators must also have a **safety management system** that complies with Marine Order 504. It is important that you consider all the activities you undertake when developing and reviewing your safety management system.



Prepare a safety management system.



Apply for a certificate of operation unless exempt.



A safety management system (SMS) is a legal requirement that details the practices and procedures to be followed to ensure the safety of the vessel and the people on board. All ranger vessels must have a SMS.

Marine Order 504:



Exemption 03:



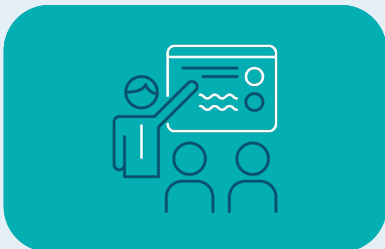
Safety Management Systems



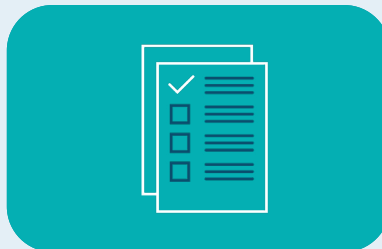
3. Your crew

The master of a vessel is required to hold a valid certificate of competency, issued in accordance with *Marine Order 505 (Certificates of Competency)* unless an exemption has been granted by AMSA under *Exemption 14 – Marine Safety (Sea Rangers)*.

Certain conditions apply, including for example that a Coxswain Grade 3 can carry no more than 6 persons, including master and crew; and the holder of Exemption 14 can only use the vessel for purposes associated with ranger activities, and cannot undertake any tourism or fishing activities.



Complete the required course at an approved RTO, unless exempt.



Gather all required documentation for your application.

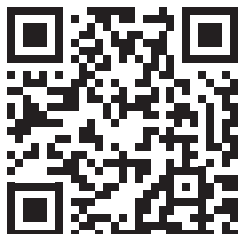


Apply for a certificate of competency or Exemption 14.



Ensuring your crew are appropriately qualified and trained leads to better safety outcomes. Certificate of competency requirements vary depending on the vessel length, propulsion power and area of operation.

Registered training organisations:



Marine Order 505:



Exemption 14:



4. Your passengers and special personnel

The vessel's Certificate of Survey, Exemption 02 or Exemption 40 outlines how many people may be on board at any given time, including number of passengers and/or 'special personnel'.

For ranger vessels, special personnel might be on your vessel in order to perform special work associated with your operations. They could include: visiting scientists undertaking research activities; Traditional Owners and Elders imparting knowledge and undertaking cultural heritage management work; or a trainee.

In the below example, the vessel requires 1 crew (Coxswain) and can carry a maximum of 3 special personnel. No passengers are allowed.

Class(es) and number of persons this vessel is authorised to carry under this approval:

Note: the total number of passengers permitted on board is the sum of the unberthed and berthed values show below.

Class	Crew	Unberthed passengers	Berthed passengers	Special personnel
2D	1	0	0	3

Passengers do not perform any of the functions of the master, crew or special personnel. In many situations they are fee-paying (tourism) passengers.

In the below example, the vessel requires 2 crew and can carry a maximum of 4 unberthed passengers.

Class(es) and number of persons this vessel is authorised to carry under this approval:

Note: the total number of passengers permitted on board is the sum of the unberthed and berthed values show below.

Class	Crew	Unberthed passengers	Berthed passengers	Special personnel
2D	2	4	0	0

It is important that your safety management system considers the risks associated with having passengers and special personnel onboard, including vessel inductions and updating operational and emergency procedures.

Safety equipment lists

These equipment lists are general in nature and may not apply to your individual circumstances. Vessel owners should confirm on a case-by-case basis that they carry the required equipment for the vessel's particular circumstances and operations for which they are engaged.



Class 2 includes vessels involved in ranger and tourism activities (no more than 12 passengers). Class 3 includes vessels involved in commercial fishing activities, and cannot carry passengers.

Vessels in survey



Class 2C



Class 2D



Class 2E



Class 3C



Class 3D



Class 3E

Exemption 40 vessels



Vessel equipment
guide non-surveyed
vessels class 2 and 3
inshore operation

Additionally, Exemption 40 vessels must carry:

- At least 2 litres of emergency drinking water for each person on board
- Sound signal (canister horn) and spare canister
- Oars x2 (vessels <5m)
- 9L robust bucket and lanyard
- Fire blanket (>120kw engine in enclosed space)

Non-survey vessels



Class 2D and 3D



Class 2E and 3E